



2.5" SPEED BUMP



RubberForm's 2.5" Speed Bump is the only speed bump available on the market that can be used as a free-standing or permanent device to slow down speeds below 10 mph. Their unique design not only allows them to stay in place without the use of spikes, lag bolts, and/or adhesives, but also multiple configurations and unlimited connectivity.

Our speed bump is manufactured with solid, masticated recycled rubber to withstand extreme temperatures, constant U.V. light, extreme weather conditions, and of course, high traffic volume.

The 2.5" Speed Bump is the ideal choice for parking lots, guarded gate entrances or exits, construction sites, school drop-off or pick-up areas, traffic stops, or anywhere a permanent or temporary traffic control device needed.

Key Features

- Easy to install, remove and recover
- Embedded high-visibility AASHTO reflectors – yellow, red, or white
- Can be used on dirt or gravel roads
- Portable or Permanent – stainless steel lag bolt and anchors for permanent installation
- Multiple configurations and unlimited connectivity
- Made in the USA with 100% masticated recycled rubber



Made in the USA



100% Recycled Material



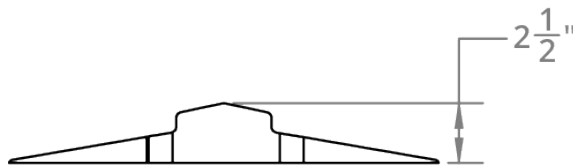
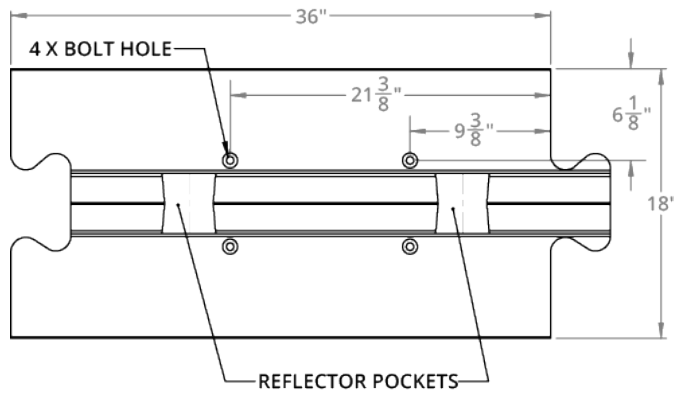
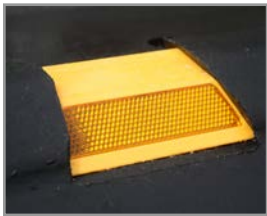
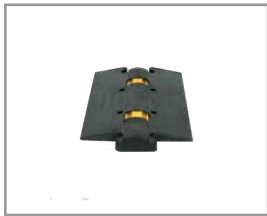
Increase LEED Score



2.5" SPEED BUMP SPECIFICATIONS

Models

RF-MLSB2.5



Specifications

- 32 lbs
- 2.5"H x 18"W x 36"L
- Masticated recycled tire rubber
- 2 embedded, high visibility AASHTO two-way yellow reflectors

Hardware Kit

RF-MLSBHWK

- 4 - Lag Bolts: 3/8"W x 5"L
- 4 - Washers: 3/8"W x 1"L
- 4 - Anchors

RF-RBR14HDG

- 14" Galvanized Forged Mounting Spike with Cap

RF-RBR24/36

- 24" or 36" rebar spike for dirt and gravel road installation

RF-DREA14

- 14" dirt road earth anchor with drive flat top
- 1.5" tapped hole depth for threaded bolt
 - bolt, nut, and washer included
- Installs with 1-3/8" socket

