



ENGINEERED TRAFFIC CURB



The RubberForm Engineered Traffic Curb (ETC) is injection molded with our Next-Gen Recycled Composite Material that combines recycled rubber and plastic for superior performance proven to outlast concrete with hard-wearing durability and low maintenance.

Ideal for temporary or permanent traffic curbing in place of concrete or asphalt, our ETC requires no excavation and is easy to install. Each curb section can be spiked with rebar into gravel or dirt surfaces, or lag bolted into asphalt or concrete along with dual flange connectors that hold it in place. ETC's will withstand heavy traffic impacts and can be fabricated and installed to your specific requirements.

RubberForm's Engineered Traffic Curb is a customer-designed product that can be used for lane separation, traffic islands, pedestrian islands, center medians, curb protection, parking lot delineation, water diversion and many other custom applications.

Key Features

- Easy to install, remove, and relocate – for temporary or permanent use
- Indoor or outdoor use
- Extremely durable – withstands heavy traffic impacts
- Resistant to temperature, UV light, oils/fuels, salts, and moisture
- Will not chip, crack, crumble, or spall
- Made in the USA with 100% recycled composite material



Made in the USA



100% Recycled Material



Increase LEED Score



ENGINEERED TRAFFIC CURB SPECIFICATIONS

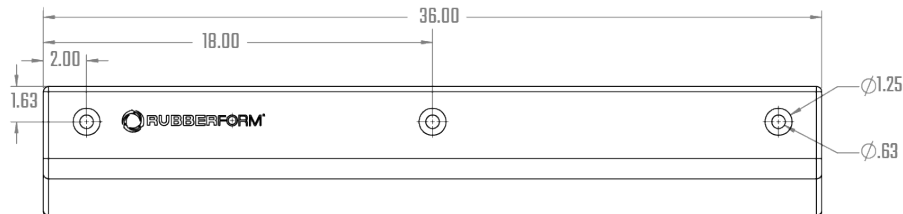
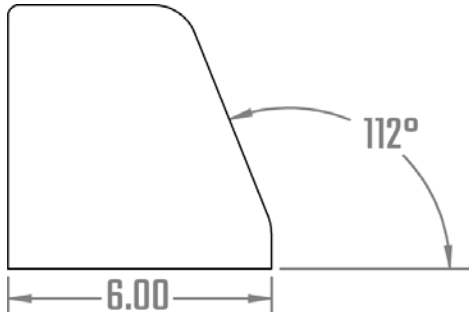
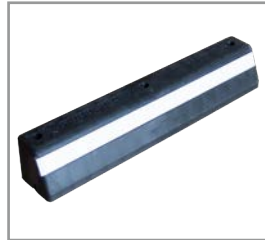
Models

RF-ETC36

- Engineered Traffic Curb - All black

RF-ETC36R-YLW/WHT

- Engineered Traffic Curb with optional yellow or white 3-foot reflective strip



Specifications

- 18 lbs per curb
- 6"H x 6"W x 36"L
- 3 foot sections
- 3 mounting holes per curb
- Color Options: Plain Black or Plain Black with White or Yellow stripe

Hardware Kit

RF-ETC36HWK

- 3 - 1/2" x 10" Lag Bolts
- 3 - 1/2" x 1-1/8" Washer
- 3 - 1/2" x 3" Anchors
- 3 Black Rubber Caps
- 1 Dual Flange Connector

RF-RBR

(For installation on dirt or gravel)

- 14", 18", 24", or 36" long galvanized rebar spikes with cap head

